



EHR Core Research (ECR) Virtual Poster Hall



Title: The Effects of Geographic Locale on Access to Work-Related Experiential Activities
PI: Karen Webber, co-PI: Amy Stich WREA Team Members: David Tanner, Matt Grandstaff, Collin Case, Elizabeth Ndika, Amanda Aragon, Marguerite Madden, Jerry Shannon Institution: University of Georgia

Purpose

This three-year, multi-institution study will examine students’ access to work-related experiential activities (WREAs) relative to their geographic proximity to major economic and workforce regions.

Geospatial Data and Methods

Spatial data:

- Occupational profile of surrounding areas
- Businesses or other WREA possibilities
- Access to amenities

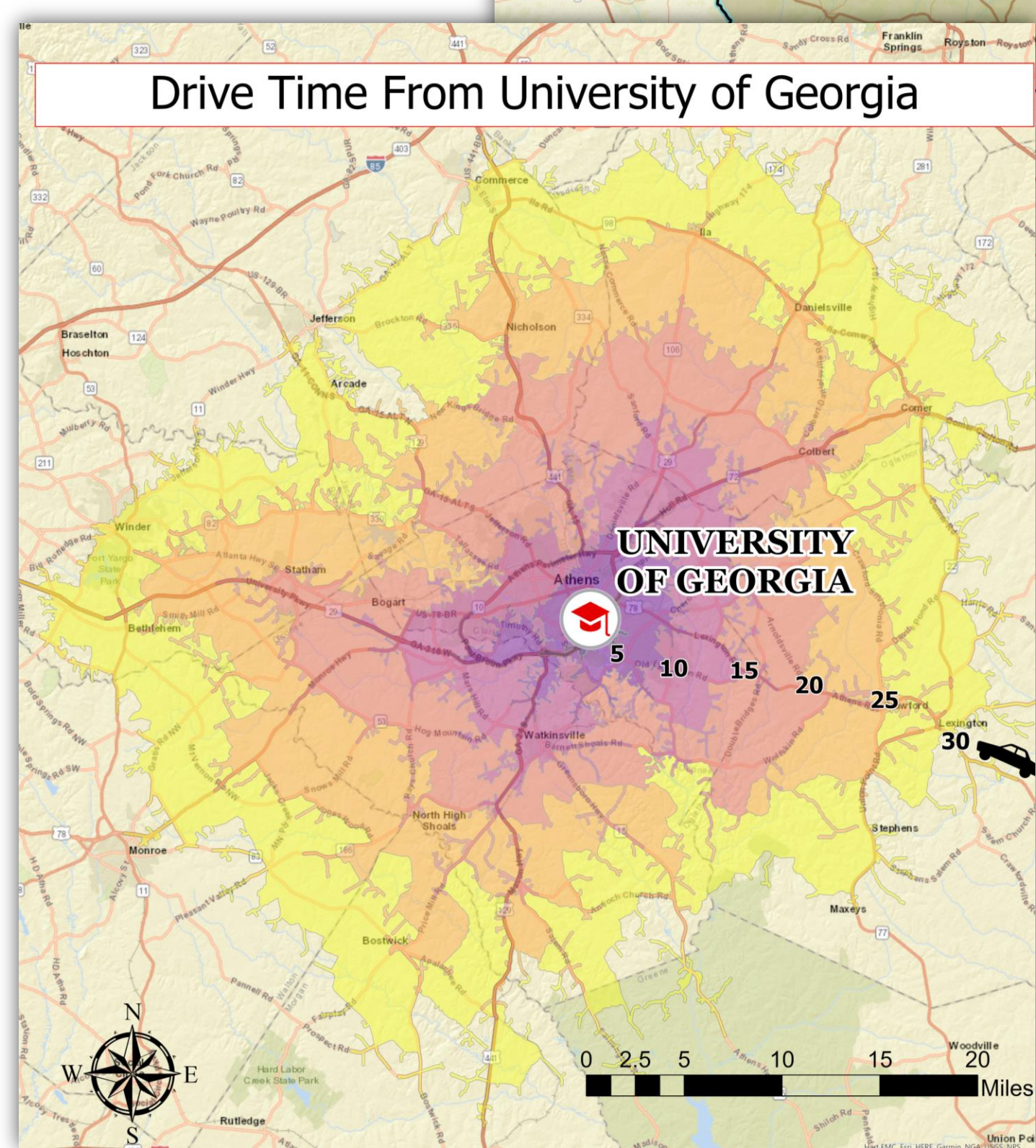
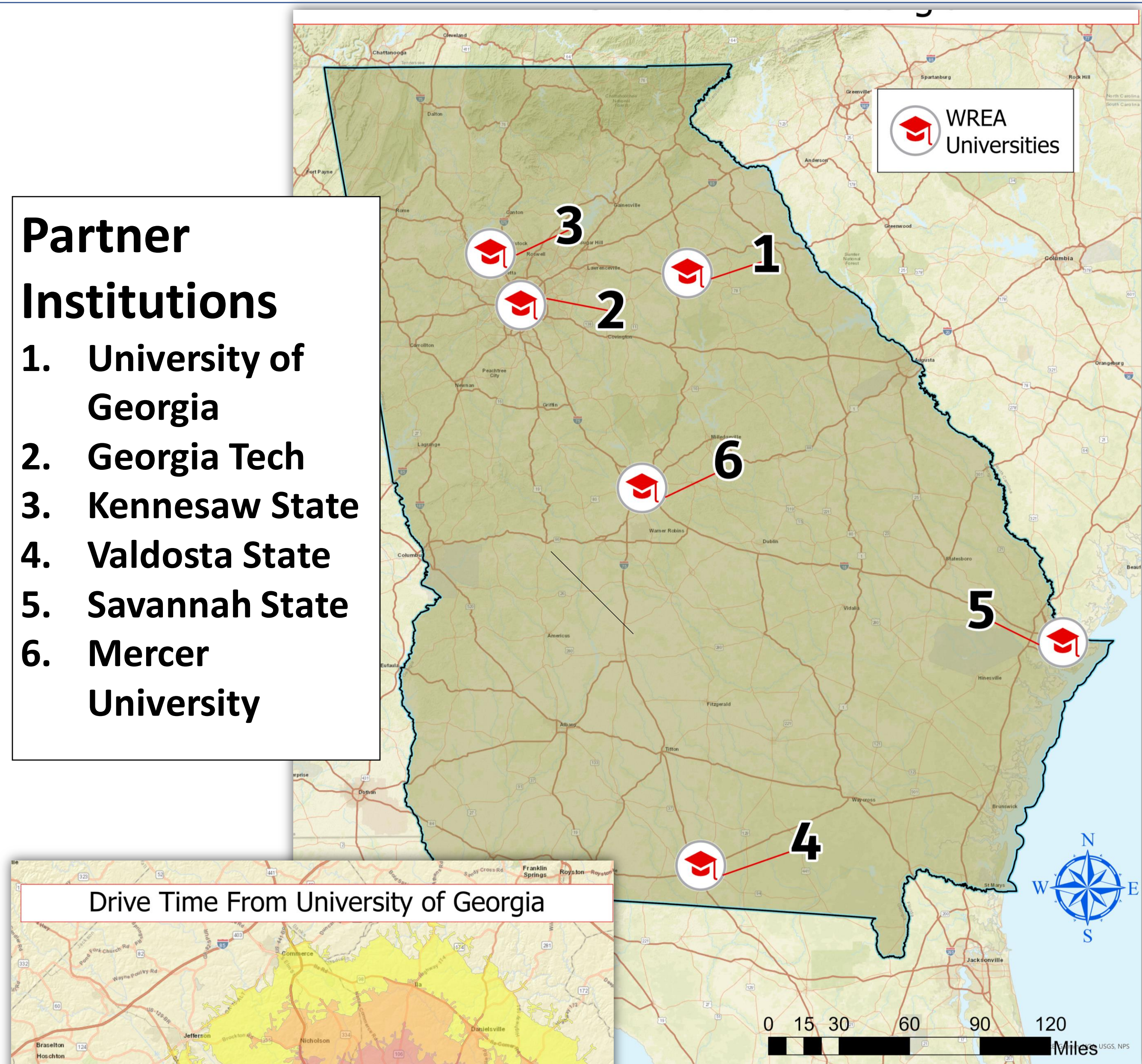
Analysis methods:

- Develop an Opportunity Index for census tracts near each university.
- Assess geographic factors affecting WREA selections
 - Proximity to opportunities
 - Local amenities
 - Distance from WREA to home and school



Partner Institutions

1. University of Georgia
2. Georgia Tech
3. Kennesaw State
4. Valdosta State
5. Savannah State
6. Mercer University



Map shows 30-min. driving time from UGA in 5-min. increments.

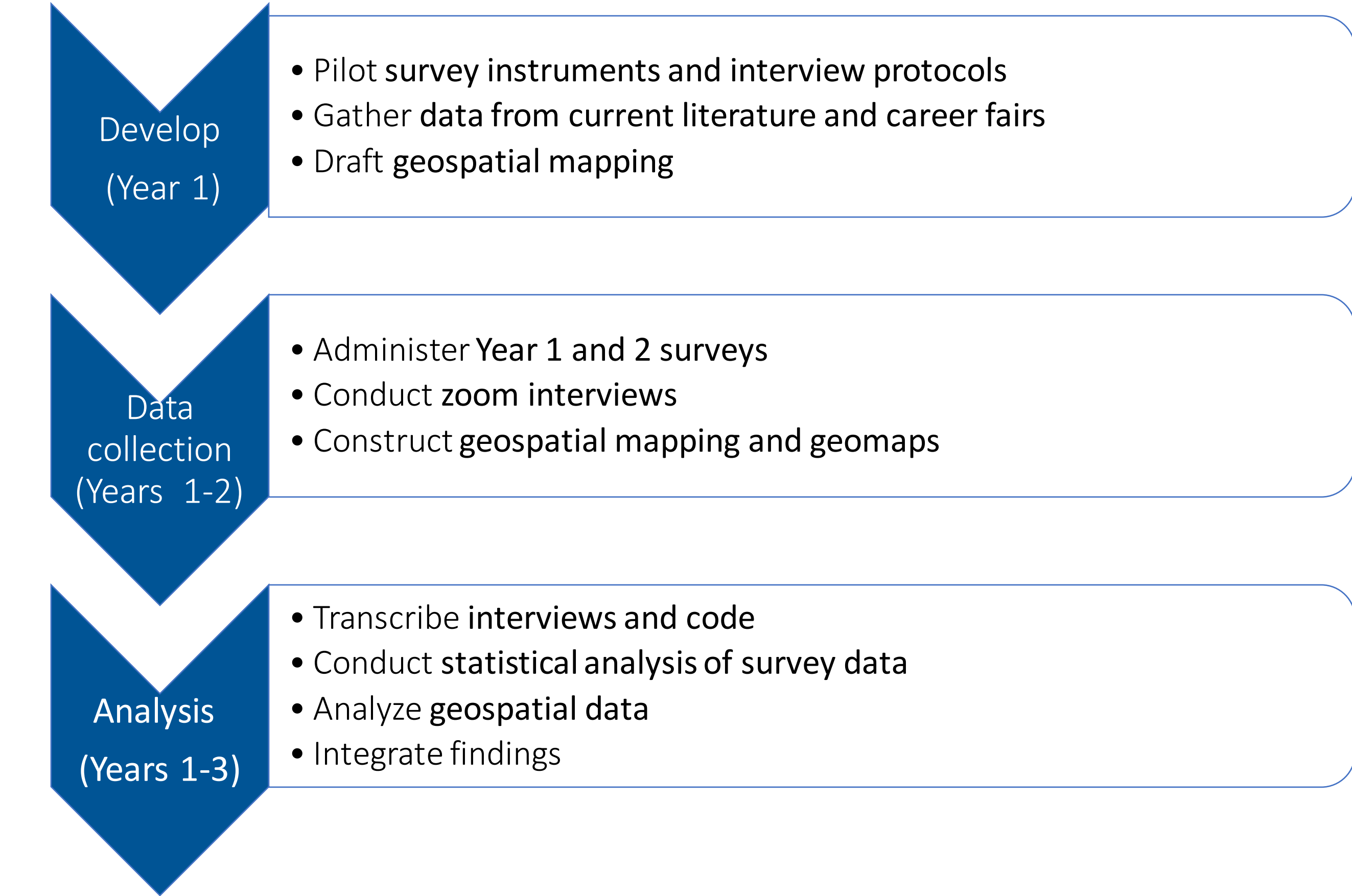
Mixed Methods

- Surveys
- Individual, semi-structure interviews
- Integration with geospatial data

Participants

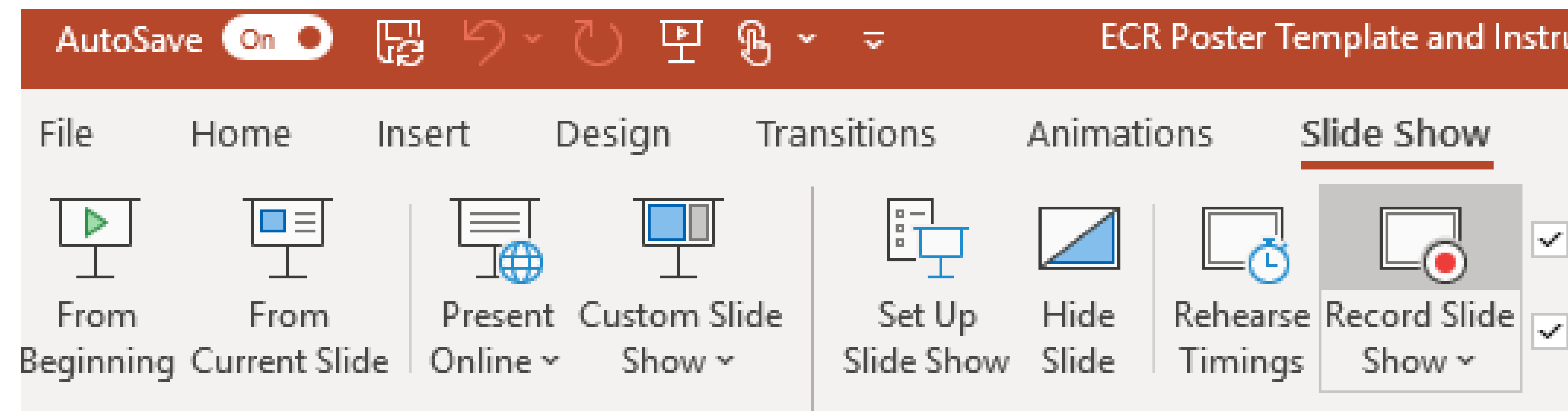
- Fields: engineering and computer science
 - Recently hired alumni recruiters
 - Employers
 - University Career Center staff
 - Student survey respondents

Timetable Years 1-3

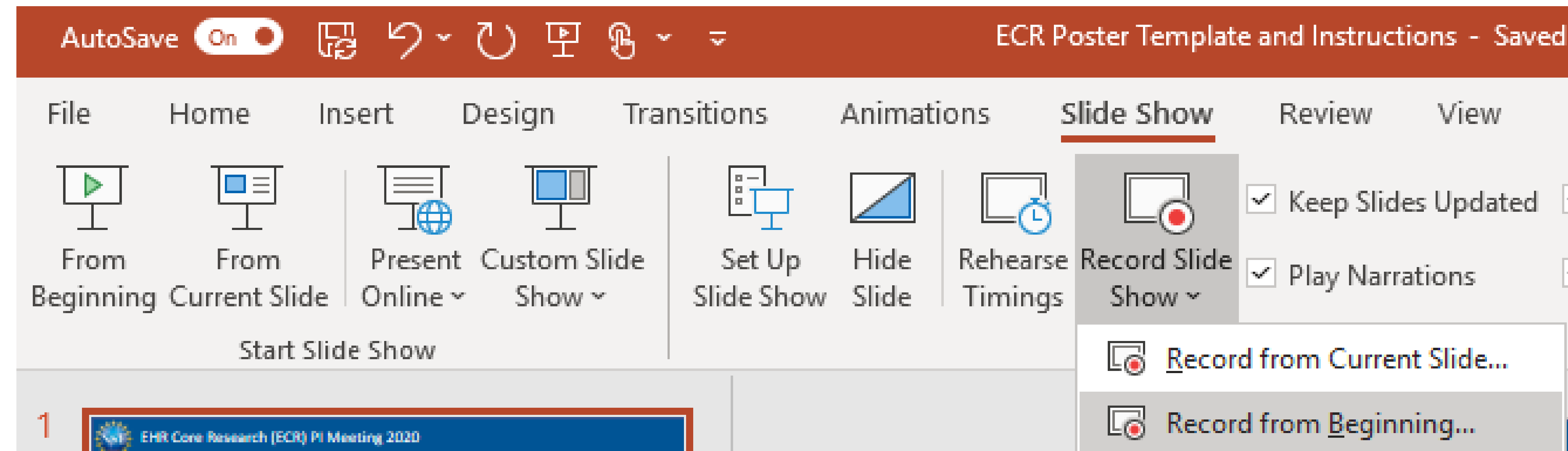


Create and record your presentation

1. Create your poster using the template provided.
2. Select **Slide Show** on the ribbon, then select **Record Slide Show**.



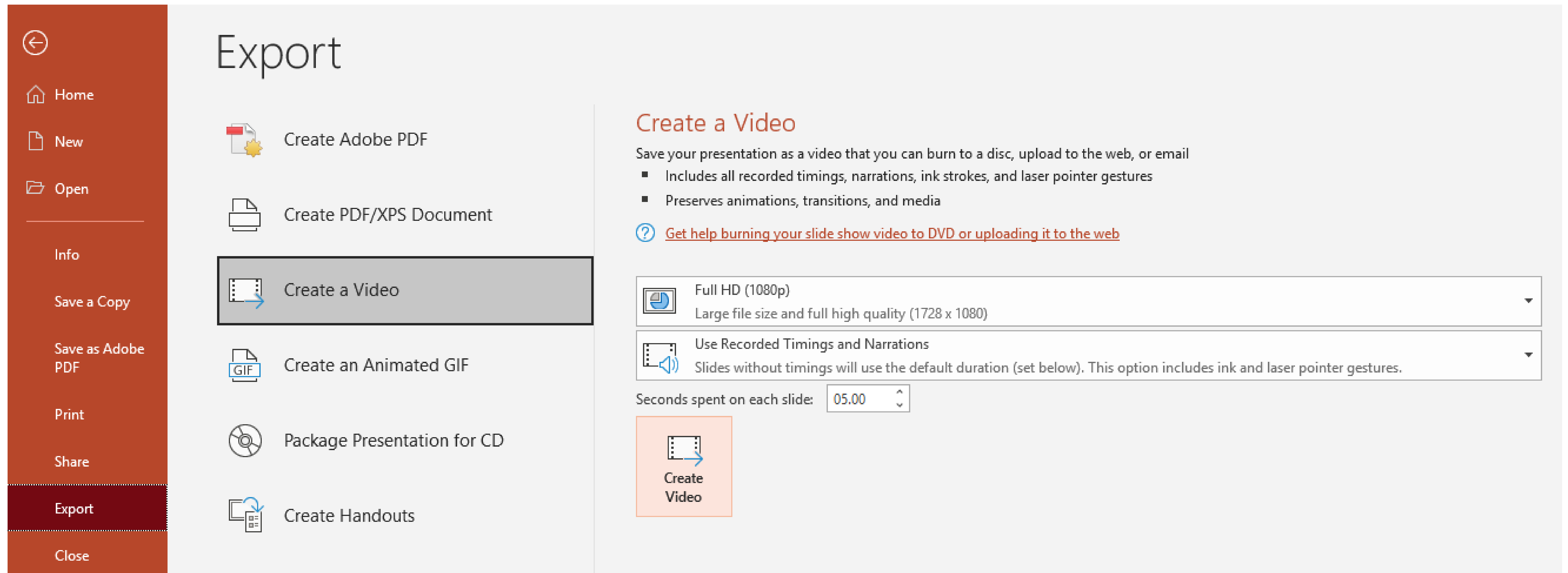
3. Select **Record from Beginning...**



4. Record a 3-minute presentation for your poster.

Export your presentation as an MP4 file

1. Click on **File** in the ribbon and then **Export**.



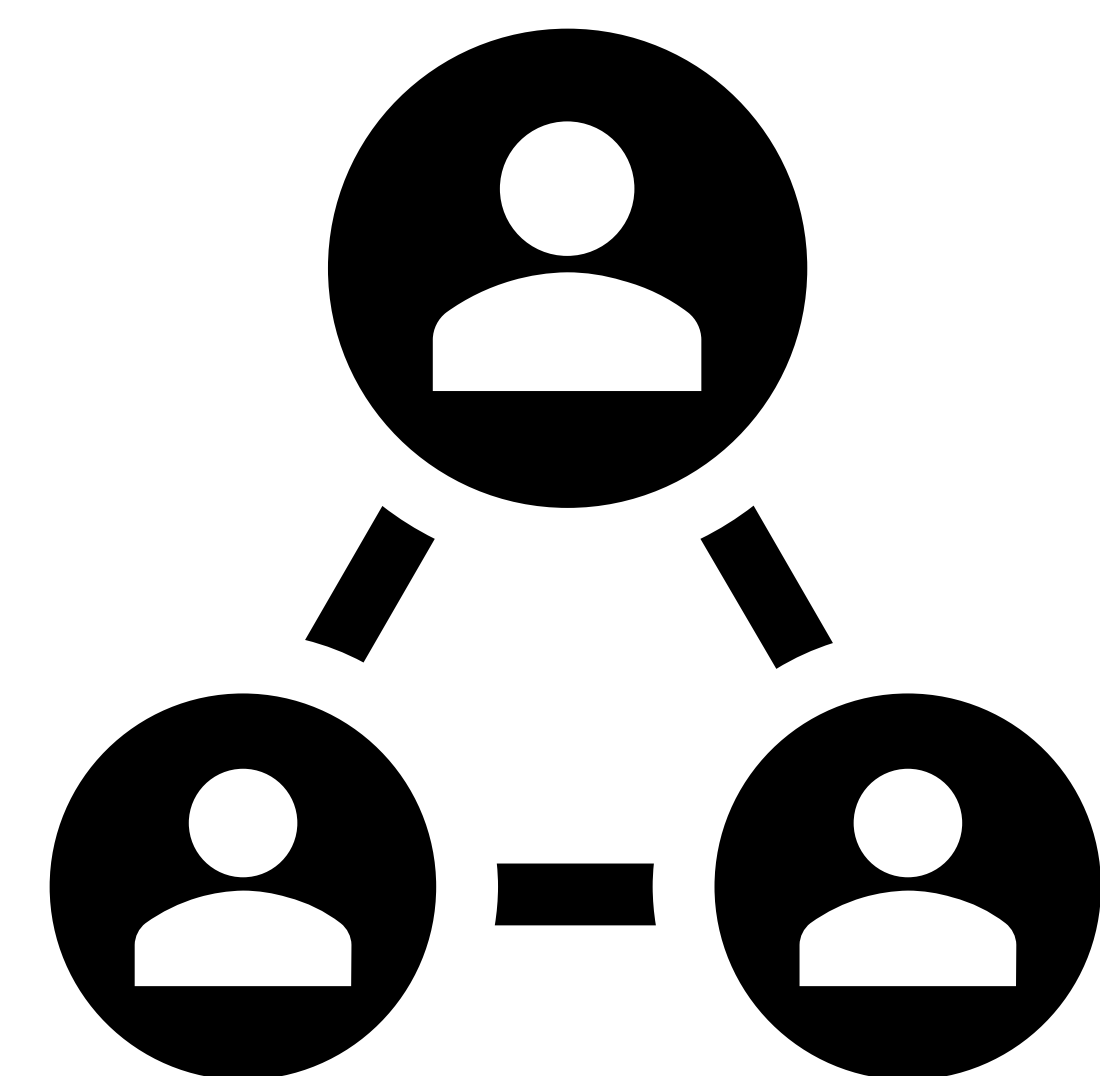
2. Select **Create a Video**.
3. Click on **Create Video** on the right side.
4. Use the naming convention, "LastName_FirstName_Presentation" for your MP4 file name.
5. Upload your file to



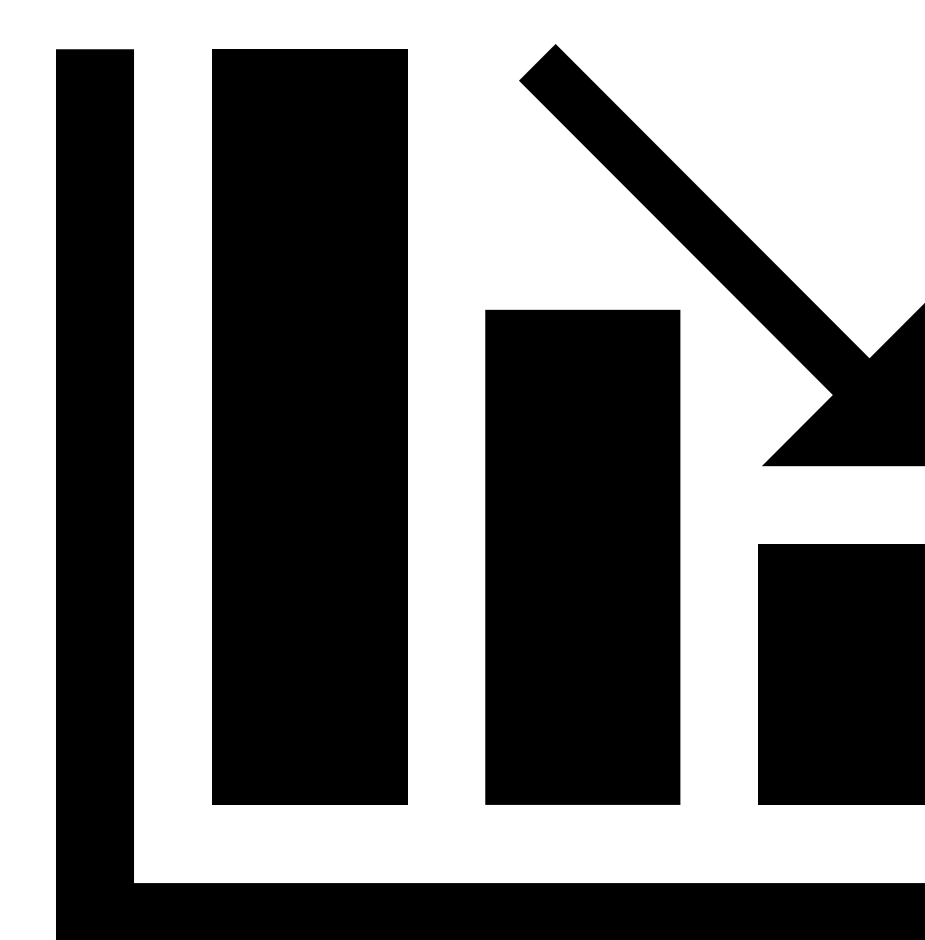
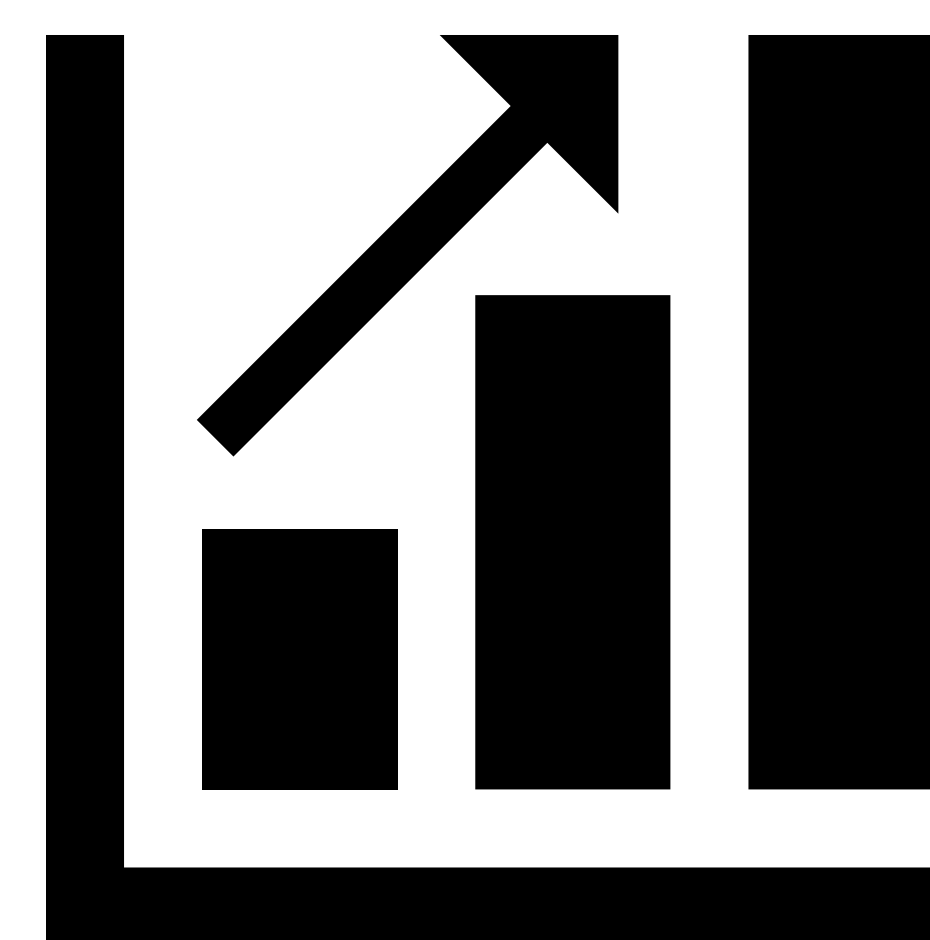
Title
PIs
Institution(s)

Finding(s)

Increasing the frequency of feedback increases student learning.



Results



A	B	C	D	E
143	15.5	0.4	370	17.3
102	14.8	0.04	240	16.9
110	17.5	0.1	423	18.2
156	11.8	0.02	9	15.7

Methods

Subjects
Sample sizes
Independent variables
Dependent variables
Analysis methods