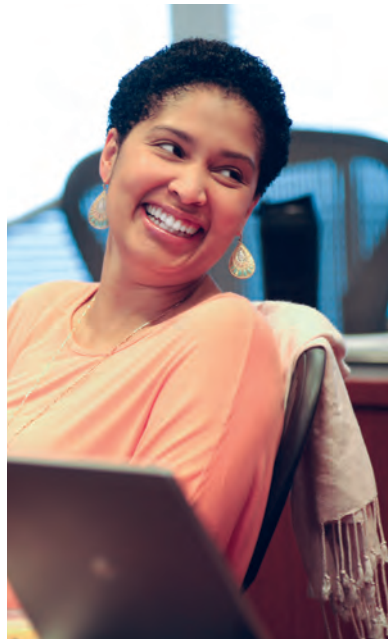


EXECUTIVE DOCTORATE

Higher Education Management



Institute of
Higher Education
UNIVERSITY OF GEORGIA

THE UNIVERSITY OF GEORGIA offers top-ranked doctoral programs in higher education administration—including a unique Executive Ed.D.—through its highly regarded Institute of Higher Education.



THANK YOU FOR YOUR INTEREST in the Institute of Higher Education's Executive Doctorate program in Higher Education Management. Our program places top-caliber students under the guidance of leading faculty to equip them to excel in the ever-evolving world of higher education. Our alumni consistently report that the program challenged them as practitioners and had direct impact on their effectiveness and career opportunities and progression.

With a strong emphasis on cultivating leadership skills, our Atlanta-based program is ideal for mid-level professionals seeking to take the next step in their careers. If you would like to learn more about how this program can help you reach your professional goals, please contact us about joining the next cohort. We look forward to hearing from you!

CHARLES KNAPP
President Emeritus, University of Georgia
Director, Executive Doctorate in Higher Education Management

IHE's Executive Doctorate program offers:



- A meeting schedule that allows you to pursue a doctorate without pause from a full-time career.
- A cohort-based format that enables you to learn from fellow professionals and build a valuable network.
- Weekend classes conducted at a conveniently located state-of-the-art education center in Atlanta.
- Two international trips that provide exposure to other systems of higher education.

ENGAGE

with cohort members from diverse backgrounds.

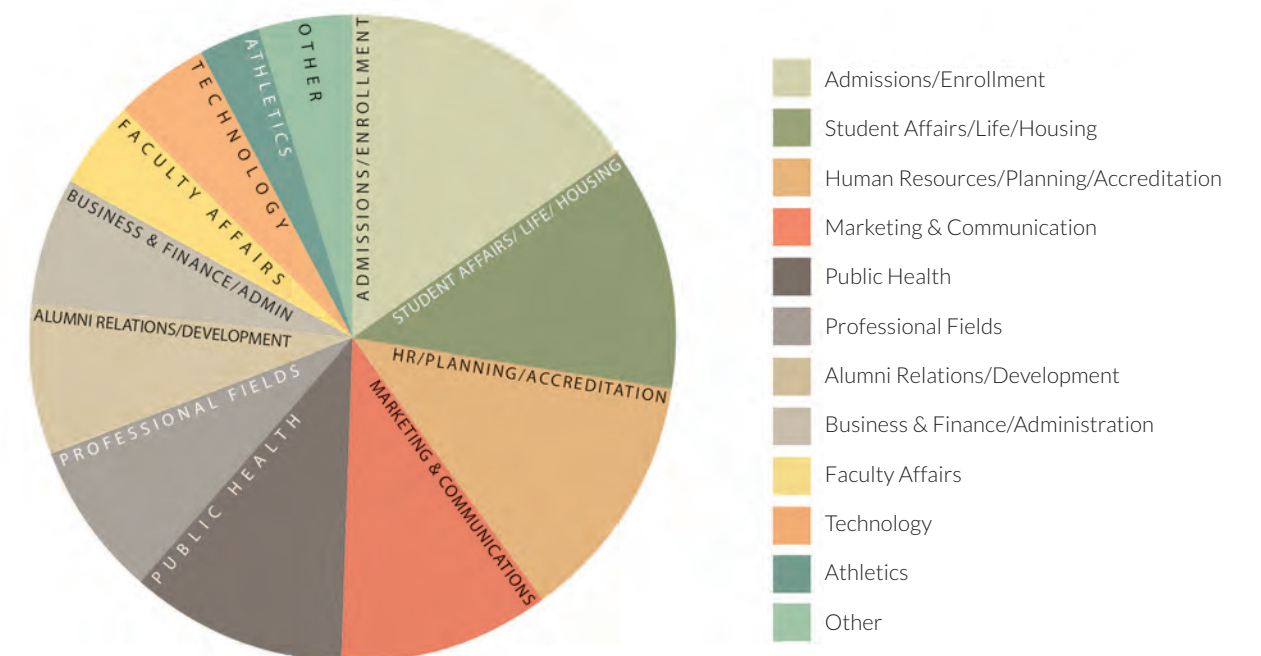
A TARGET CLASS of 16-18 participants is enrolled every other year and meets every six weeks over a four-day weekend (traditionally Thursday-Sunday) in Atlanta. Members of each cohort are diverse in terms of background and experience. Students represent both public and private institutions, nonprofit agencies and government entities. Cohorts also reflect the diversity in higher education on all levels—from institution structure and size to race, gender and region. Alumni cite the cohort model as one of the most engaging and rewarding aspects of the program.



“The time spent together as a cohort was memorable beyond expectations.” —Katie Lloyd, Ed.D. 2015

“My favorite memory is of interaction with professionals—both cohort members and IHE faculty—across all areas of higher education. Their experience and knowledge added greatly to the dialogue and supported learning objectives with relevant and timely real-world examples.” —David Snow, Ed.D. 2013

Professional Fields Represented by Entering Executive EdD Students



DEVELOP

skills to advance your career.

THE EXECUTIVE Ed.D. PROGRAM focuses on broadening students' perspectives on current issues in higher education and showcasing the multi-faceted role of leadership in post-secondary education. Core coursework covers the history of higher education, higher education research methods, state and federal policy, finance, and institutional research. The curriculum centers on the increasingly entrepreneurial nature of universities and colleges and also introduces students to international perspectives of higher education systems around the world.

Our program equips students with the skills necessary to both conduct and evaluate research applied in managing complex organizations. Core courses in higher education research design and methods enable students to define research questions and construct appropriate studies around topics of their choosing.

Leadership training is emphasized throughout the program, and leaders from academic, political and corporate worlds are invited as guest lecturers to share how they approach difficult issues. This component of the program is consistently cited by alumni as having made a lasting impression on the way they think through challenges in their own careers.

“Conversations with leaders from a broad spectrum of public, private and nonprofit entities gave us invaluable insights into how to handle complex situations—not just to manage, but how to really lead.”—Kathy Pharr, Ed.D. 2011



IHE EXECUTIVE EdD PROGRAM OF STUDY

Total Credit Hours = 52

First Semester **Spring**

Higher Education in the U.S.
Introduction to Research in Higher Education

Second Semester **Summer**

Qualitative Methods in Higher Education
Organization and Governance in Higher Education
Comparative Higher Education (Europe)

Third Semester **Fall**

Quantitative Methods in Higher Education
Finance of Higher Education
Doctoral Research

Fourth Semester **Spring**

Academic Programs in Higher Education
Policy Studies in Higher Education
Doctoral Dissertation

Fifth Semester **Summer**

Law and Higher Education
Strategy and Management
Critical Issues in Higher Education (China)
Doctoral Dissertation

Sixth Semester **Fall**

Administrative Leadership in Higher Education
State Systems of Higher Education
Doctoral Dissertation

LEARN

from knowledgeable and supportive faculty.

FACULTY IN THE INSTITUTE OF HIGHER EDUCATION are recognized nationally and internationally for their cutting-edge research and engaging classroom discussion. Core faculty hold degrees in a wide range of disciplines, which ensures a multidisciplinary approach to the study of higher education management. Visiting faculty include esteemed scholars from universities across the country.

“IHE’s best asset is unquestionably their world-class faculty. I found each of my professors to be extremely engaging, knowledgeable and willing to help me explore any facet of higher education that I was interested in.”—Danny Sniff, Ed.D. 2011

Students are paired with a major professor by the end of their first summer in the program and are encouraged to follow their own areas of expertise and ongoing interests in the selection of a dissertation topic. The sample dissertation titles (right) from three graduating cohorts show the range of topics.



DISSERTATION TITLES

- *How Student Philanthropy Programs at Public Research Institutions Assist the Student Experience to Impact Future Alumni Giving*
- *Exploratory Study of the Career Pathways of Male and Female Presidents at 4-Year, Private Liberal Arts Colleges in the Southeast and their Enactment of the Job*
- *Interdisciplinarity and the Undergraduate Major: Academic Capitalism at the Heart of the University*
- *Improving Student Success for African American Males: Examining Students’ and Administrators’ Perceptions of Influence on Changes to Curriculum and Instruction*
- *Please Pay Retention: A Quantitative Analysis of Institutional Expenditures and Their Impact on Retention at Public Two-Year Colleges*

EXPERIENCE

international perspectives.

INTERNATIONAL STUDY is a key component of the Ed.D. program, providing valuable insight into higher education on a global level. During each summer session, the cohort travels abroad for an intensive week-long educational experience. The current schedule includes trips to the Centre for Higher Education Policy Studies in the Netherlands and to the Ministry of Education in Beijing and top universities in Beijing and Shanghai. Students receive a certificate of completion for international study abroad upon graduation.



“IHE is committed to an internationally focused curriculum. The seminars abroad provided an excellent opportunity to learn from and work with many of the world’s leading international scholars in higher education.”—Raymond Carnley, Ed.D. 2015

“My favorite memory at IHE would have to be our trip to the Netherlands during the first summer of the program. The trip allowed us to engage with leaders from other cultural perspectives and share ideas and approaches that might have merit in the other’s educational system.”—Stuart Evans, Ed.D. 2011



JOIN

a network of accomplished alumni.

STUDENTS IN THE EXECUTIVE Ed.D. PROGRAM become members of a tightly knit and highly accomplished network of higher education professionals. The connections within and between cohorts are lasting and beneficial. Alumni of the Executive Ed.D. program work across the U.S. in a variety of areas within or related to the field of higher education.



“IHE’s Ed.D. program allowed me to delve into aspects of higher education I never would have discovered on my own, and the credential, without question, helped me secure my role as Deputy Assistant Commissioner at the Texas Higher Education Coordinating Board.”—Chad Puls, Ed.D. 2013

“Each day, I draw on my UGA experience in setting direction, solving problems, and making a positive imprint in my new role as Young Harris’ CFO. Working for a college that recently shifted from a two to four-year institution carries new challenges, and I am confident that my comfort with leading change, as well as effectively managing process, was the key factor in my appointment.”—Brooks Seay, Ed.D. 2011



“I find that I use the research and analytical skills that were honed through my training in the Ed.D. program in my everyday work at the Mellon Foundation. Long-term, I think the program has given me a platform to make a contribution, whether it is in higher education, in private philanthropy, or in other relevant fields. I’ve found the skills and knowledge gained through IHE to be highly useful and transferable.”—Makeba Morgan Hill, Ed.D. 2013



“I owe so much to the UGA experience. I literally would not have been considered for my current job without the degree, and my responses to questions were informed by knowledge gleaned from the IHE faculty and fellow students alike.”—Tim Doyle, Ed.D. 2011

“At the end of my first year in the program, I am already presented with new opportunities. In a recent interview, my connections in the Ed.D. cohort and what I have learned in the program proved to be worth their weight in gold.”

—Steve Bettner, 2016–17 Cohort



INVEST *in yourself!*

THE NEXT COHORT for the Executive Doctorate in Higher Education will begin classes in January 2020. Applications are accepted starting June 1, 2019.

The Executive Doctorate program charges a combined tuition and program fee that includes all meals, lodging, books and some international travel. It does not include travel expenses to and from the program site.

Applicants must hold a master's degree from an accredited institution. The GRE is not required. The application process is done online through the University of Georgia Graduate School <http://grad.uga.edu/>. The following supplemental documents should be sent directly to the UGA Graduate School along with your application:

- Current resume
- Three letters of recommendation, including one from the applicant's current direct supervisor
- Statement of up to 750 words on what the applicant hopes to both achieve and contribute through participating in the program
- Transcripts from all previously attended institutions

For more information about the Executive Ed.D. Program, visit <http://ihe.uga.edu/graduate-programs/executive-edd> or contact:

DR. LESLIE GORDON, *Associate Director, Executive Ed.D. Program*
Institute of Higher Education, 016 Meigs Hall
University of Georgia
Athens, GA 30602-6772

Email: gordonls@uga.edu • Phone: 706-542-0576

About the Institute of Higher Education

FOUNDED IN 1964, the Institute of Higher Education at the University of Georgia is committed to advancing higher education policy, management and leadership through research, graduate education and outreach. The institute's graduate programs in higher education administration are consistently ranked among the top ten in the country.



Visit IHE at <http://ihe.uga.edu>, at facebook.com/UGAIHE and at twitter.com/uga_ihe.